

## Boat & trailer parking 2019

### Before the race:

- Crosshaven – at the Royal Cork Yacht Club (RCYC): Open Friday 31 May until 21:00. Saturday open from 07:00.
- Monkstown: please note that this is a public slip without secured boat storage. We advise participants to not leave their boats unattended.
- Cork city - Horgan's Quay: Open Friday 31 May, from 18:00 (see below for directions).

### After the race:

Either at your accommodation or at Horgan's Quay parking area, Cork city, which opens:

- Friday 31 May: from 18:00
- Saturday 1 June: all day
- Sunday 2 June: before 07:30 or between 10:00-13:00\*\*

**\*\*IMPORTANT:** due to the Cork City Marathon on Sunday 2 June, there won't be any possibility of getting to or from Horgan's Quay between 07:30 and 10:00 in the morning. We recommend that anyone using Horgan's Quay until Sunday, also leaves their car there – as car access in the direction of Horgan's Quay will be very limited.

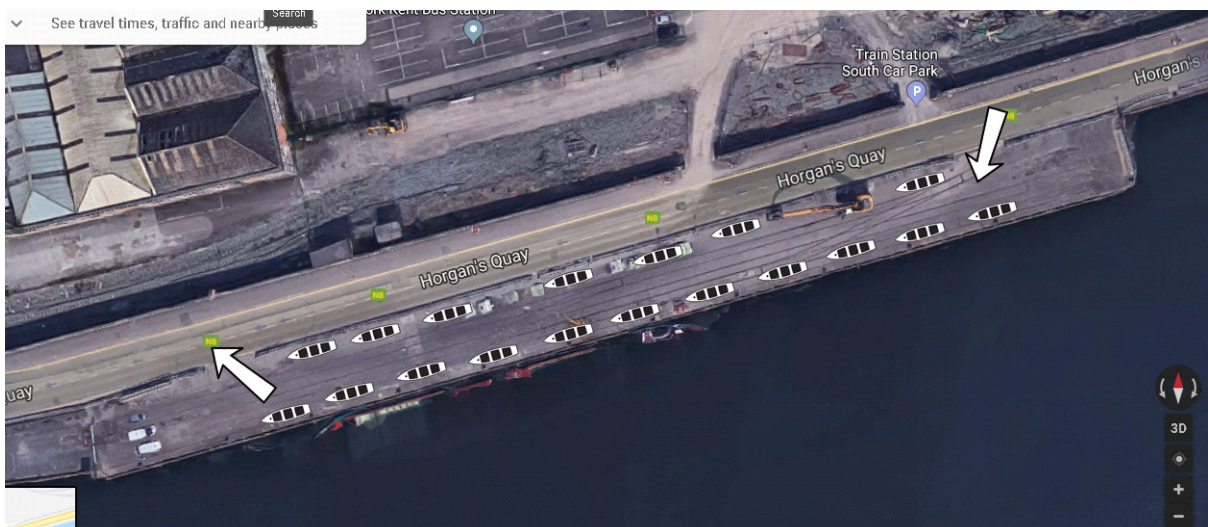
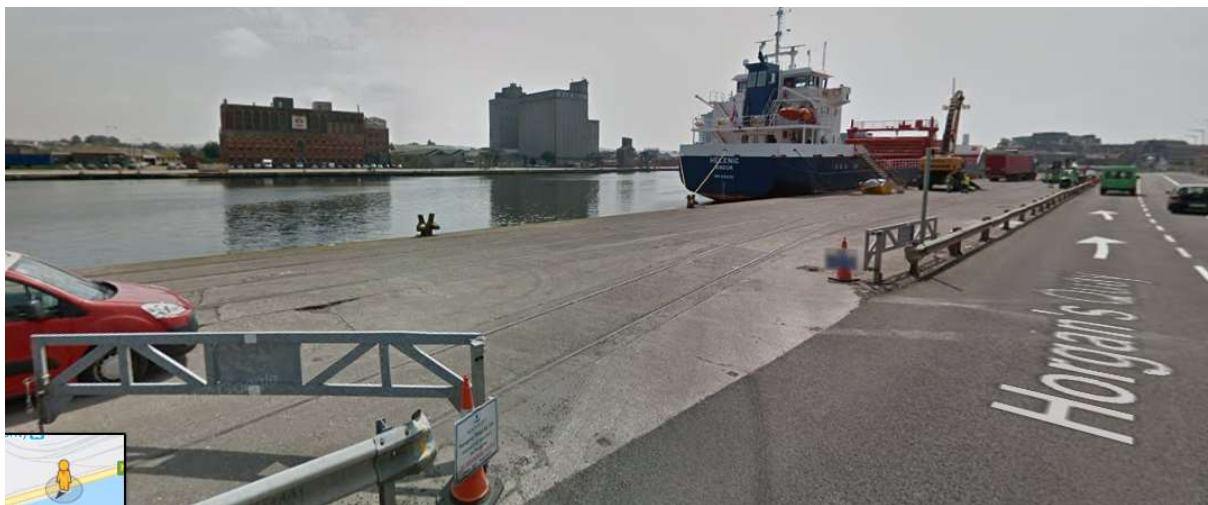
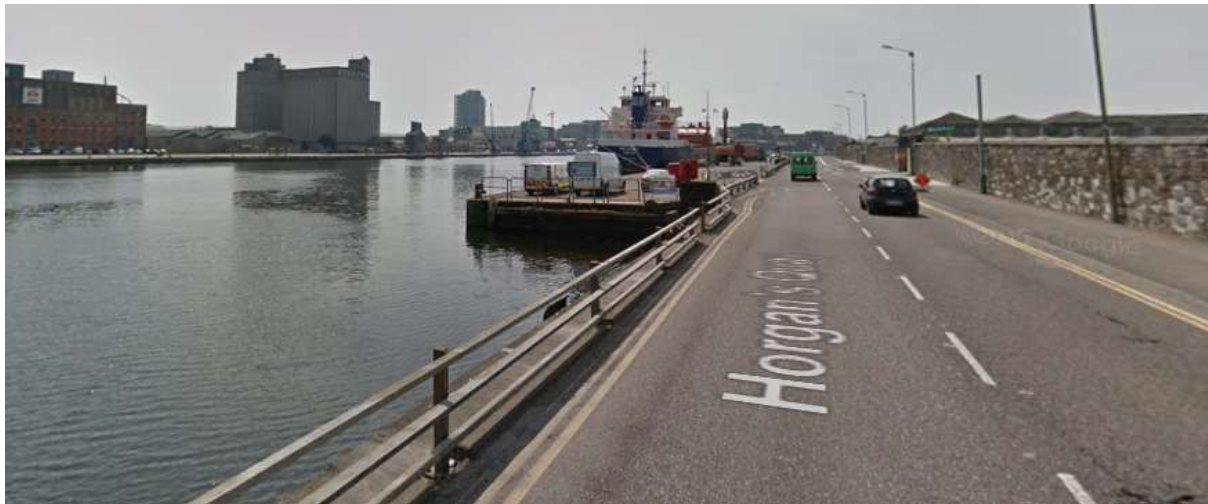
### Access times and routes - Sunday 2 June:

- **Before 7:30:** Cars and trailers can get to or leave Horgan's Quay before 07:30 on Sunday, before any of the road closures kick in.
- **7:30 – 10:00:** There won't be any possibility of getting to or from Horgan's Quay between 07:30 and 10:00 in the morning.
- **10:00 – 12:00:** Cars and trailers can leave Horgan's Quay and travel along St. Patrick's Quay and Camden Quay; turn right onto the Watercourse Road and straight out to the North Ring Road/R635. This will give access to the Mallow Road for anyone travelling to Limerick or the west. Everyone else should go east on the North Ring Road/R635 and join the Lower Glanmire Road near the Silversprings Hotel and continue east on the Lower Glanmire Road to Dunkettle roundabout. This gives access to Dublin, Waterford, Rosslare, the South Ring Road/N40 and onwards to west Cork, Kerry, etc.
- **12:00 - 13:00:** The Lower Glanmire Road will be open again and cars can leave Horgan's Quay onto Penrose Wharf, right onto the Lower Glanmire Road and straight out to the Jack Lynch Tunnel. City Centre and west of city centre will still be affected by road closures.
- **13:00:** Security will be stood down and the gates will be locked. All trailers and cars need to have left at this stage. Any cars/trailers remaining after 13:00 will be left there at their own risk without the ability to exit.



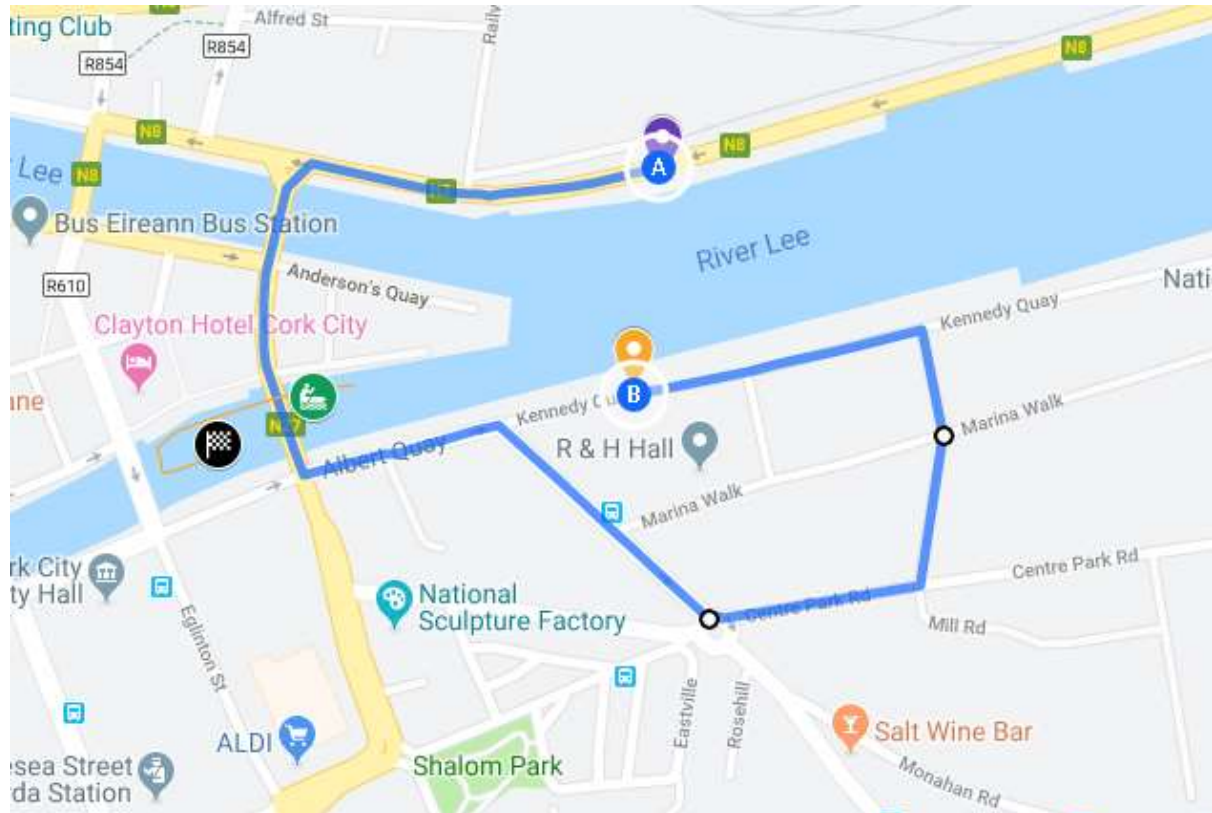
## On Horgan's Quay:

- Entry will be through the very first gate, at the east side of Horgan's Quay.
- Exit will be through the last gate at the western end of Horgan's Quay.
- Trailers must be parked along either the left or the right side of the quay, keeping a clear path through the middle of the quay for exiting trailers (see pic below).
- Take care of the open quay side. All trailers must face west – as you will exit through the western gate.
- See page 1 for opening hours, entry and exit times.



## Directions 2: Trailer Parking to Craning Area (finish line recovery crane)

- Exit the trailer parking area through the western gate
- Turn left onto Horgan's Quay, and the first left – going over two bridges.
- Directly after the second bridge (by The Sextant), turn left onto Albert Quay
- Follow the one-way system, turning left at the roundabout; left again onto Mill Road; and finally, left again on Kennedy Quay (you will now be to the east of the craning area)



### Directions 3: Craning Area to Trailer Parking

- Exit the craning area, turning left towards the round about
- Turn right at the roundabout, into Albert Road.
- At the traffic lights, turn right; going back across two bridges.
- At the second bridge, stay in the right hand lane; turning left onto Penrose Quay and immediately right – direction Dublin.
- Follow the directions to Dublin until you pass under a railway bridge, and then take an immediate right back into the direction of Horgan’s Quay.
- See page 1 for opening hours, entry and exit times.

